


| | |
|----|----------------------------|
| 03 | PACIFIC ITALIA |
| 04 | OUR VISION |
| 05 | H2O FLOOR |
| 06 | OUR COLLECTIONS |
| 08 | WOOD REGULAR |
| 16 | WOOD XL |
| 22 | STONE XL |
| 30 | INSTALLATION & MAINTENANCE |
| 31 | SUSTAINABILITY |
| 33 | TECHNICAL AREA |



MATERIAL IS MOVEMENT. DESIGN IS EVOLUTION.

Pacific Italia creates surfaces that combine technology and beauty, designed to last over time.

Every surface is born from continuous research on materials, offering innovative and sustainable solutions capable of transforming spaces into sensory experiences: light that flows, textures that react to the touch, colours that give rhythm to architecture.



OUR VISION, OUR MATERIAL

We believe in design that lasts and in surfaces that express authenticity. Pacific Italia is a project that looks at the world of surface coverings with the aim of contributing to a more sustainable future, without sacrificing elegance.

Research, performance, and quality guide every choice: reliable materials, controlled processes, contemporary aesthetics. This is how material becomes everyday architecture.

WHY CHOOSE H2O FLOOR

Performance that lasts
over time.

H2O Floor is our range of innovative indoor coverings,
composed of stone, wood, and polymers.

Waterproof, stable, and easy to install, with a material realism that
surprises at every glance.

Compatible with underfloor heating, safe for indoor air, designed
for those seeking certified reliability and essential beauty.



100%
waterproof



Maximum
acoustic comfort



Fire resistant
Bfl-s1



R10
anti-slip



Compatible with radiant
underfloor heating



Easy
to clean



Fast installation
with click system

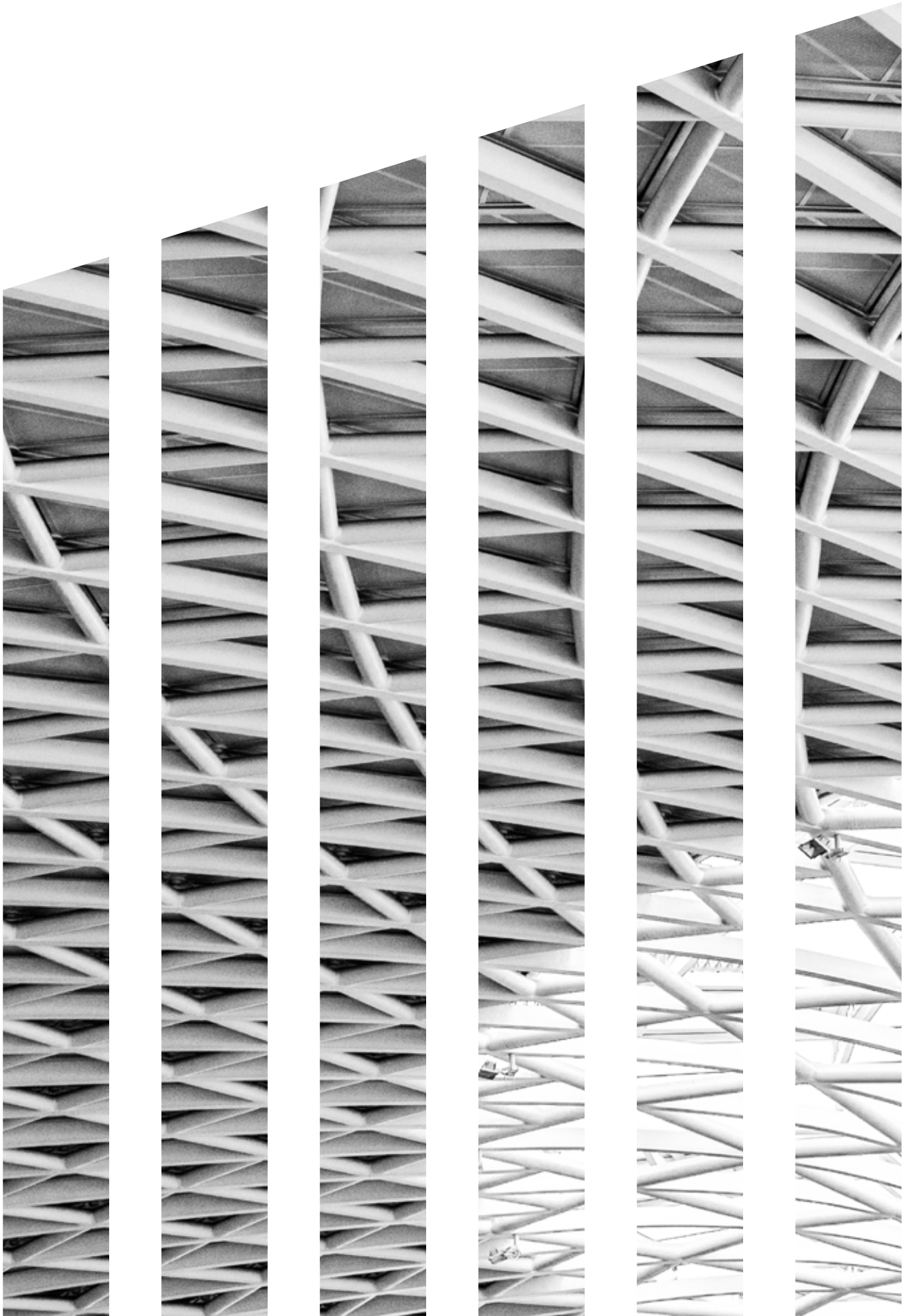


High resistance
to foot traffic

COLLECTIONS INSPIRED BY NATURE

Wood, stone, contemporary surfaces: each line is a dialogue between nature and technology.

Brushed textures, light embossing, balanced tones. Proportions enhance space; details add character. Choosing H2O Floor means choosing surfaces that speak the language of architecture: clean, functional, emotional.



WOOD REGULAR



The origin of our experience

The line that marked the beginning of the H2O Floor journey: brushed surfaces for a natural touch, essential tones for contemporary environments, and reliability proven by years of installations across Italy.

Wood Regular represents the balance between aesthetics, durability, and installation simplicity.

Technical specifications

Regular Plank



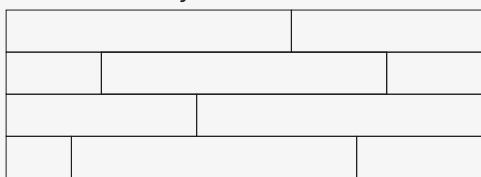
Size: 1220 × 182 × 5.5 mm

Surface: brushed

Installation: floating – UNILIN click

100% waterproof

Installation layout



Wood Regular essences

POPLAR



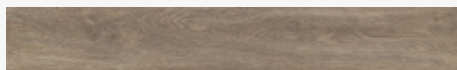
SLAVONIAN OAK



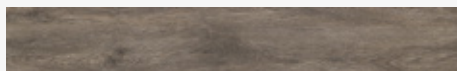
CLASSIC OAK



NEW SMOKE



WENGUÈ



GREY OAK





POPLAR

WOOD REGULAR

Chiaro, morbido, accogliente

Poplar brightens interiors with gentle light. Its delicate grain and brushed finish offer a sense of natural everyday warmth: ideal for airy living spaces, contemporary kitchens, and contract environments requiring visual serenity.



Regular Plank



Size: 1220 × 182 × 5.5 mm

Surface: brushed

Installation: floating – UNILIN click

100% waterproof



SLAVONIAN OAK

WOOD REGULAR

European excellence and authenticity

Balanced tones, visible grain, natural style. The ideal choice when seeking identity and chromatic versatility, from minimal to contemporary classic interiors.



Regular Plank



Size: 1220 × 182 × 5.5 mm

Surface: brushed

Installation: floating – UNILIN click

100% waterproof



CLASSIC OAK

WOOD REGULAR

Timeless warmth

Oak in its most iconic expression. A reliable base for projects requiring continuity—from elegant residential spaces to long-lasting retail. The brushed surface enhances comfort underfoot.



Regular Plank



Size: 1220 × 182 × 5.5 mm

Surface: brushed

Installation: floating – UNILIN click

100% waterproof



NEW SMOKE

WOOD REGULAR

Modern balance

Warm tones with subtle smoky shades: soft grain that follows the light and brings breath to urban spaces.

New Smoke pairs beautifully with satin metals and material surfaces, shaping essential yet characterful interiors.



Regular Plank



Size: 1220 × 182 × 5.5 mm

Surface: brushed

Installation: floating – UNILIN click

100% waterproof



WENGUÉ

WOOD REGULAR

Depth and character

Dark, bold, elegant. Wengué envelops the space with an intense and contemporary presence; the brushed finish enhances its tactile richness. Ideal for interiors with strong and scenic design.



Regular Plank



Size: 1220 × 182 × 5.5 mm

Surface: brushed

Installation: floating – UNILIN click

100% waterproof



GREY OAK WOOD REGULAR

Dust of light

A warm, sophisticated powder grey. Perfect for defining large, bright spaces; it blends harmoniously with light stones, natural plasters, and textured fabrics.



Regular Plank



Size: 1220 × 182 × 5.5 mm

Surface: brushed

Installation: floating – UNILIN click

100% waterproof



WOOD XL



The wood in large form

Large planks give rooms continuity and breath; light flows uninterrupted, and the design takes centre stage.

A line conceived for architectural projects with strong visual impact: lightly brushed surfaces, calibrated tones, and sensory storytelling.

Technical specifications

XL Plank



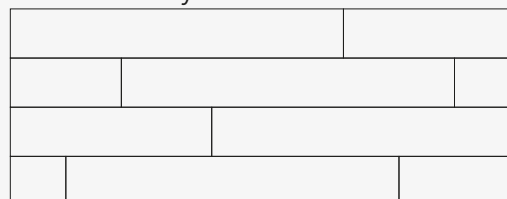
Size: 1524 × 228 × 6.5 mm

Surface: brushed

Installation: floating – UNILIN click

100% waterproof

Installation layout



Wood XL essences

AURA



ZENITH



TERRA



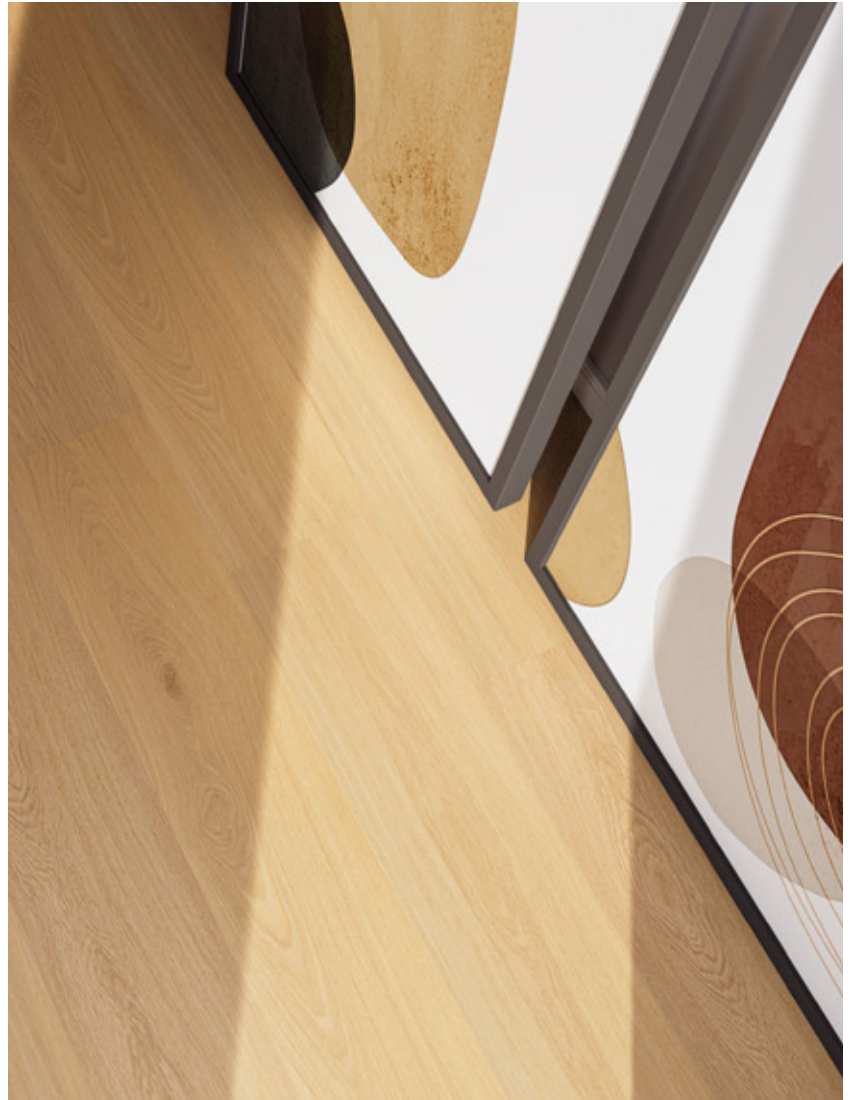


AURA

WOOD XL

Natural clarity

Aura is light itself—the most luminous essence of the H2O Floor Wood XL collection, inspired by dawn light. Its finish enhances softness and uniformity, creating ethereal, open spaces. Ideal for minimal interiors rich in breathing room.



XL Plank

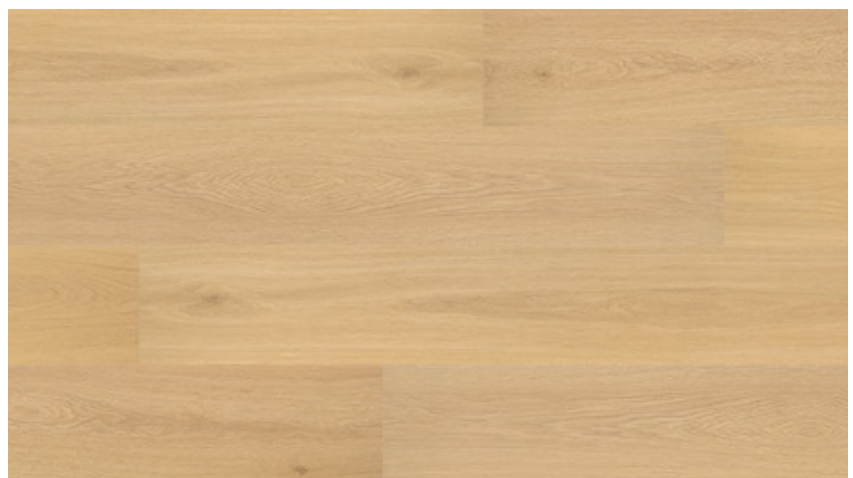


Size: 1524 × 228 × 6.5 mm

Surface: brushed

Installation: floating – UNILIN click

100% waterproof



ZENITH

WOOD XL

Absolute balance

The moment of maximum splendour—perfect harmony at midday.

Zenith's naturalised finish preserves the authentic and rooted character of oak, ideal for timeless living spaces and orderly professional environments.



XL Plank



Size: 1524 × 228 × 6.5 mm

Surface: brushed

Installation: floating – UNILIN click

100% waterproof



TERRA

WOOD XL

Depth of character

Warmth, roots, intensity. Terra expresses the chromatic richness of thermo-treated wood: intimate, luxurious, collected spaces; strong visual comfort; architecture that invites you to slow down.



XL Plank



Size: 1524 × 228 × 6.5 mm

Surface: brushed

Installation: floating – UNILIN click

100% waterproof





STONE XL



The strength of stone,
the precision of technology.

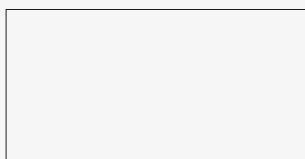
The mineral palette and light embossing make the surface perceptible to the touch.

The colour tones are inspired by real contexts: Mediterranean calcarenite, Alpine dolomitic limestone, volcanic basalts, and cast concrete.

The result is an authentic stone effect, both in tone and veining, able to give continuity, material depth, and character to the project.

Technical specifications

XL Tile



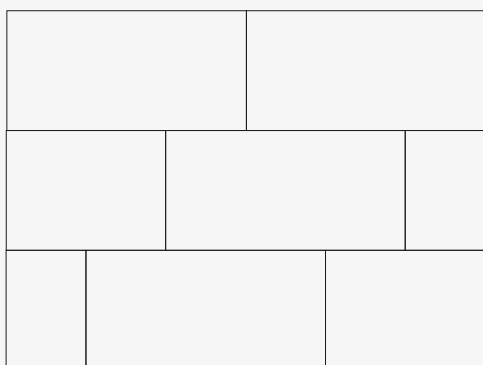
Size: 914 × 457 × 6.5 mm

Surface: lightly embossed

Installation: floating – UNILIN click

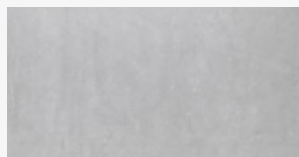
100% waterproof

Installation layout

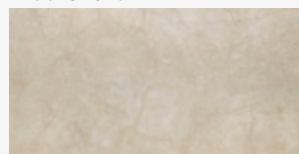


Stone XL colors

DOLOMITE STONE



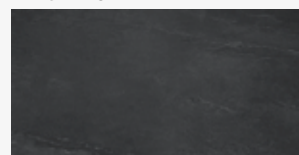
LECESE STONE



FUSED CONCRETE



BLACK BASALT





DOLOMITE STONE

STONE XL

Bright, mineral, elegant

Alpine limestone with a light and clean tone. Fine, orderly stratifications and clear shadows. Defined by excellent chromatic stability, it pairs perfectly with natural woods, glass, and brushed steel.



XL Tile



Size: 914 × 457 × 6.5 mm

Surface: lightly embossed

Installation: floating – UNILIN click

100% waterproof



PIETRA LECCESE

STONE XL

Mediterranean and radiant

Mediterranean limestone with fine grain, warm and luminous tones.

Thin veining with subtle dotted patterns: a soft, natural light shade. Evokes pale stone walls, matt plasters, and grazing light.



XL Tile



Size: 914 × 457 × 6.5 mm
Surface: lightly embossed
Installation: floating – UNILIN click
100% waterproof



FUSED CONCRETE STONE XL

Metropolitan and light

Cast cement in a medium monolithic grey. Controlled clouding and subtle shuttering marks create a clean, contemporary finish.

Evokes in-situ concrete, orthogonal geometries, and metropolitan rhythm.

Perfect with light woods, metal profiles, and transparent glass for modern or industrial style.



XL Tile



Size: 914 × 457 × 6.5 mm
Surface: lightly embossed
Installation: floating – UNILIN click
100% waterproof



BLACK BASALT STONE XL

Deep, urban, graphic

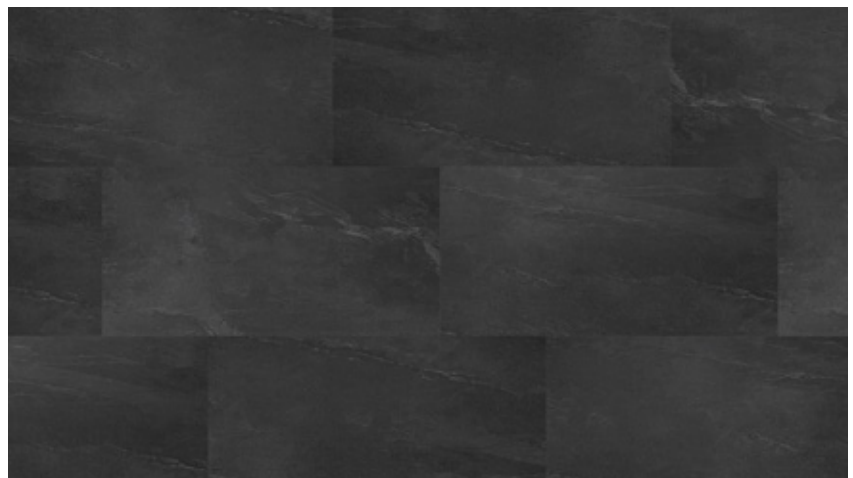
Volcanic rock with compact grain, deep uniform black. Dense movement with micro-punctuations: a bold graphic signature. Pairs beautifully with light surfaces, matt black metal, and essential architectural volumes.



XL Tile



Size: 914 × 457 × 6.5 mm
Surface: lightly embossed
Installation: floating – UNILIN click
100% waterproof

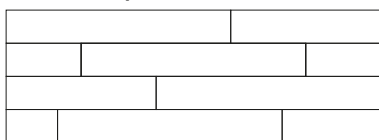




H2O FLOOR

WOOD REGULAR

Installation layout



Size: 1220 × 182 × 5.5 mm
 Surface: brushed
 Installation: floating – UNILIN click
 100% waterproof

POPLAR



NEWSMOKE



SLAVONIAN OAK



WENGJÈ



CLASSIC OAK

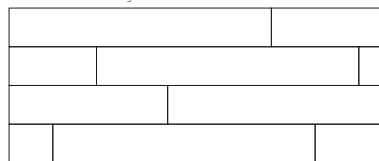


GREY OAK



WOOD XL

Installation layout



Size: 1524 × 228 × 6.5 mm
 Surface: brushed
 Installation: floating – UNILIN click
 100% waterproof

AURA



ZENITH

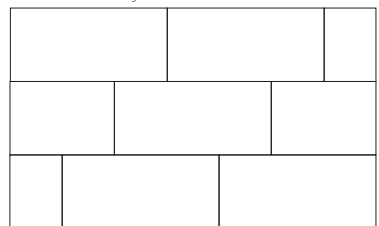


TERRA



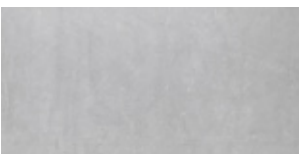
STONE XL

Installation layout

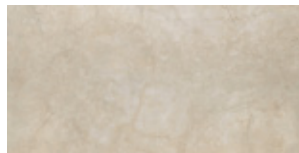


Size: 914 × 457 × 6.5 mm
 Surface: lightly embossed
 Installation: floating – UNILIN click
 100% waterproof

DOLOMITE STONE



LECCESE STONE



FUSED CONCRETE



BLACK BASALT



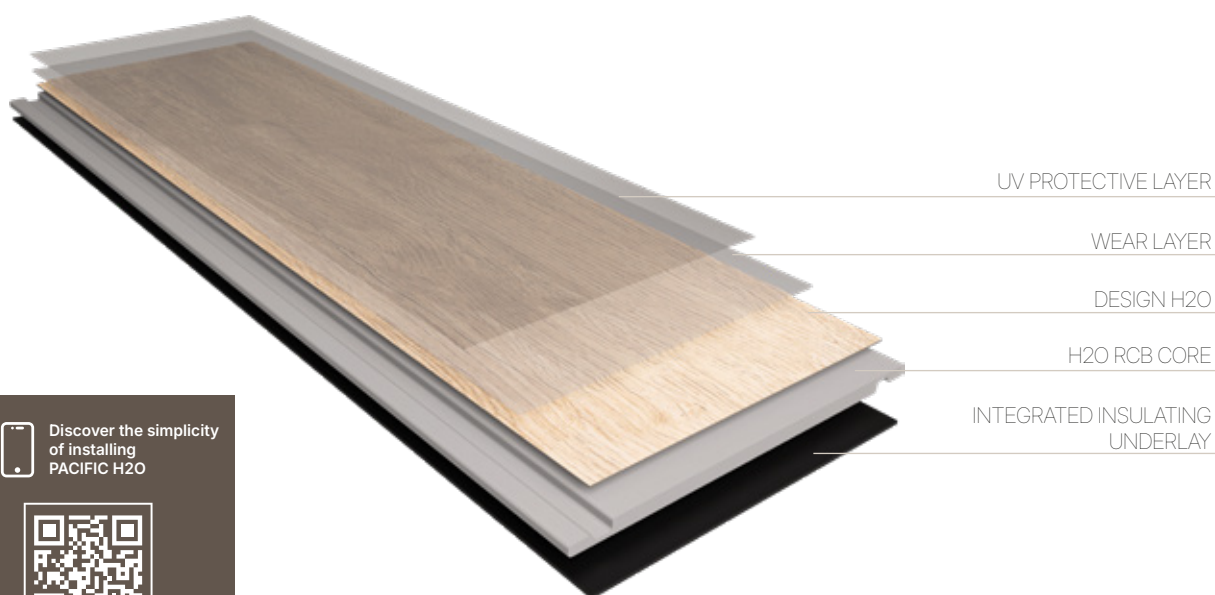
DESIGNED TO BE SIMPLE

Installation & maintenance

The UNILIN click system ensures fast and clean installation without adhesives: H2O Floor is immediately walkable.

Dimensional stability and resistance to water and humidity make it suitable even for bathrooms and kitchens; it is also compatible with underfloor heating.

The minimal presence of joints makes it highly hygienic, and daily maintenance is simple: a wipe with a microfibre cloth, regular vacuuming, and neutral pH detergents applied with a damp cloth.



CERTIFIED SUSTAINABILITY, CONCRETE COMMITMENT

Alongside design, indoor air quality, safety, and durability are priorities in our project. Pacific H2O collections are tested and certified according to the highest international standards.



Responsible design

Choosing Pacific Italia means reducing site impact (dry installation, rapid timing), extending product lifespan, and creating healthier environments. Sustainability is not a slogan but a design criterion.



TECHNICAL AREA

| Product | Size | Thickness | *Integrated insulating underlay | Pieces per box | Surface per box | Weight per box |
|------------------|---|-----------|---------------------------------|----------------|-----------------|----------------|
| H2O WOOD REGULAR | 1220x182 mm | 5,5* mm | 1,5 mm | 10 | 2,19600 mq | 18,50 kg |
| H2O WOOD XL | 1524x228 mm | 6,5* mm | 1,5 mm | 6 | 2,08482 mq | 22,00 kg |
| H2O STONE XL | 914x457 mm | 6,5* mm | 1,0 mm | 5 | 2,08849 mq | 25,00 kg |
| Product type | RCB (Rigid Composite Board) Composite material made of mineral powders, wood, and polymers + insulating underlay | | | | | |

| Tested characteristics | Regulatory reference | Results |
|--|--|-----------------------------------|
| Wear layer | - | 0.55 mm |
| Installation type | - | UNILIN Click System |
| Intended use | - | Indoor flooring |
| Usage level | EN ISO 10874:2012 | 23 34 |
| Abrasion resistance | EN 660-2:1999 + A1:2003 / EN 649:2011 | Wear group: T |
| Castor chair test | EN 425:2002 / ISO 4918:2016 | Approved |
| Colour fastness to light | ISO 105-B02:2014 – Method 3 | Grade 6 (Blue Wool scale) |
| Stain resistance | ISO 26987:2008 | Index 0 – Unaffected |
| Dimensional stability | EN ISO 23999:2008 | X: 0.05% Y: -0.12% |
| Residual indentation | UNI EN ISO 24343-1:2008 | 0.01 mm |
| Static load deformation (115 kg) | ASTM F970-07 (R2011) | 0.02 mm |
| Slip resistance (oiled ramp) | DIN 51130:2014-02 | R10 |
| Slip resistance (dry flat surface) | EN 13893:2002 | DS |
| Reaction to fire | EN 13501-1:2007 + A1:2009 | Bfl-s1 |
| Thermal resistance | EN 12664:2001 | 0.040 (m²K)/W |
| Thermal conductivity | EN 12664:2001 | 0.078 W/(mK) |
| Resistance to heat exposure -20 °C 80 °C | - | Approved |
| Indoor air quality – VOC emissions | ISO 16000-3/-6/-9/-11 SCS-EC10.3-2014 v4.0 / CDPH v1.2-2017 | Class A+ FloorScore® Certified |
| Heavy metal migration | EN 71-3:1994 + A1:2000 / AC:2002 (ICP-OES) | Approved |
| Phthalate content | CPSC-CH-C1001-09.3 (CPSIA §108) | Approved (none detected) |
| Formaldehyde emissions | ISO 16000-3/9/11 – VOC A+ / CDPH v1.2 (FloorScore®) | Compliant with EN 717-1 Class E1 |
| Impact sound insulation | ASTM E492 / E989 | IIC = 70 |
| Airborne sound insulation | ASTM E90 / E413 | STC = 72 |



Technical sheets and installation manuals

The Pacific H2O Tech Pack includes: specifications, certifications, graphic render models.

Technical data may be subject to change without prior notice. Please always refer to the latest updated version of the technical documentation available on our website.



PACIFIC ITALIA

PACIFIC ITALIA S.R.L.

Division: Innovative Surface

Via Romentino 66/F, 28069, Trecate (NO)

+39 0321 1828008 • +39 351 5166518

www.pacificitalia.it

  @pacific.italia



